

CTS-800A

Palm-size veterinary ultrasound

Compact design & easy operation

Water proof for outdoor operation

Gravity sensor for layout change

Livestock pregnancy detection

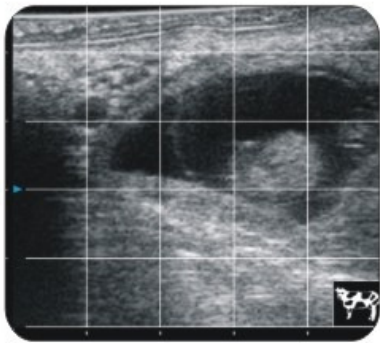


See the future
SIUI



CTS-800A

Palm-size veterinary ultrasound



Grid for Estimation



Different Layout

Specifications:

- Monitor: 5-inch WVGA LCD monitor
- Weight: 0.6 kg
- Environmental Rating: Ip64 (main unit)
IP67 (probe head)
- Probe: L65/5.0 MHz linear rectal probe (Standard)
L50/7.5MHz linear rectal probe (Optional)
R20/5.0 MHz micro convex probe (Optional)
R60/3.5 MHz convex probe (Optional)
- Battery: 2.5-3 hours operating time
- Display Mode: B、2B、ZOOM B、B/M、M
- Depth: Up to 250mm
- B Gain: 0~100
- Image Storage: 256 frames
- Cine Loop: 256 frames
- Image Layout: Gravity sensor for layout change (transverse/vertical)
- Measurement: Distance, area, circumference, volume, angle, heart rate
- Software & Report: Backfat, eyerib area, Rump fat and reproductive

